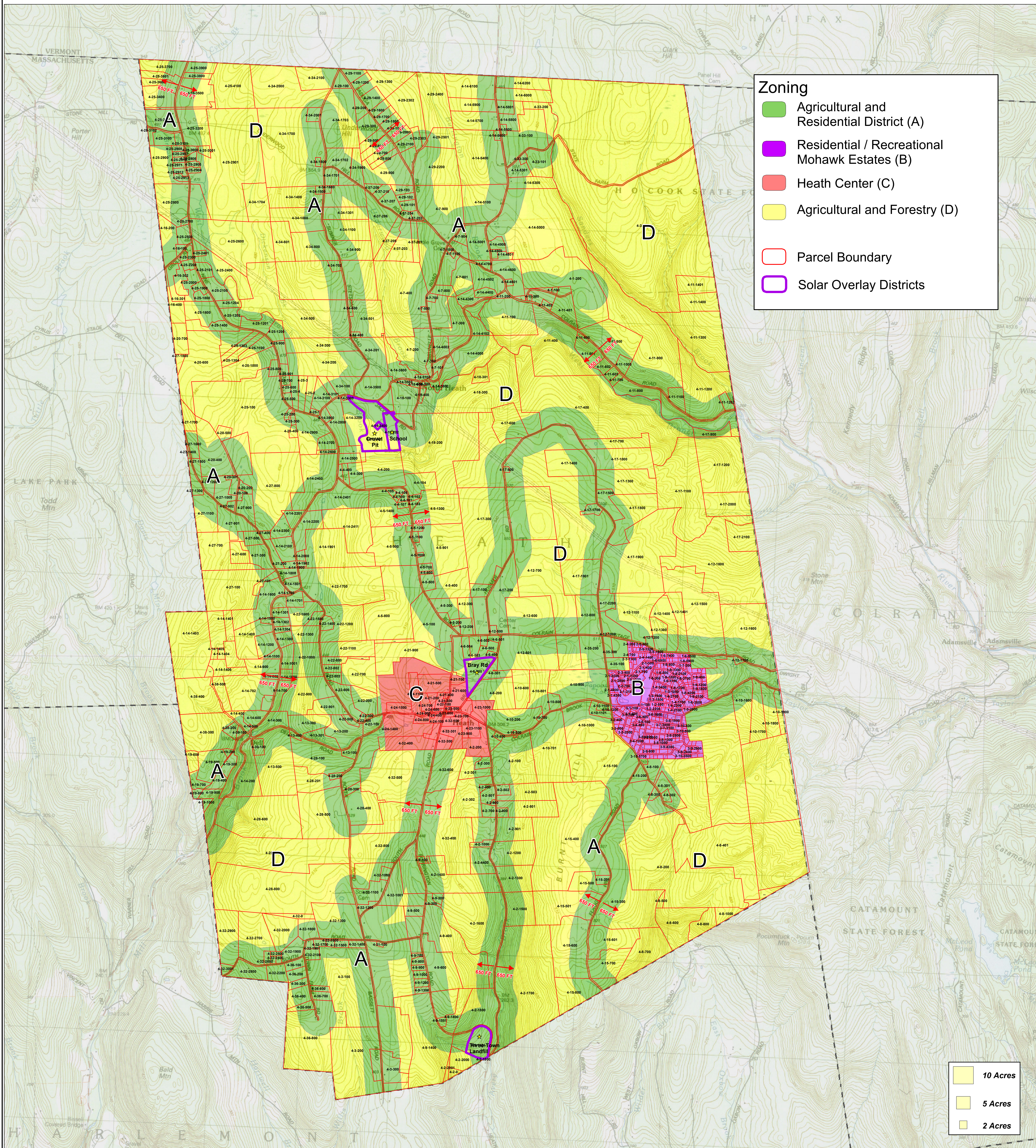


Official Zoning Map & Solar Overlay Districts

Town of Heath Massachusetts

September 7, 2012



Zoning

- Agricultural and Residential District (A)
- Residential / Recreational Mohawk Estates (B)
- Heath Center (C)
- Agricultural and Forestry (D)
- Parcel Boundary
- Solar Overlay Districts

Map Legend

- 10 Acres
- 5 Acres
- 2 Acres

Map composed by FRCOG Planning Department. c:\p1a_projects\updated_zoning2010a_projects\heath\zoning\official_solar_town.mxd

Franklin Regional Council of Governments

0 0.5 1 1.5 Miles

0 1,000 2,000 Feet

Town of Heath
Franklin County, Ma.

Map Sources:

Map produced by The Franklin Regional Council of Governments Planning Department. GIS data sources include the FRCOG Planning Department, the Massachusetts Highway Department and MassGIS. Digital data obtained from MassGIS represent the efforts of the Massachusetts Executive Office of Environmental Affairs and its agencies to record information from the sources cited in the associated documentation. EOEAA maintains an ongoing program to record and correct errors in the GIS data that are brought to its attention. EOEAA makes no claims as to the reliability of the GIS data or as to the implied validity of any uses of the GIS data. EOEAA maintains records regarding all methods used to collect and process these digital data and will provide this information on request. Executive Office of Environmental Affairs, MassGIS EOEAA Data Center, 251 Causeway Street, Suite 900, Boston, MA, 01126-1000

USGS 7.5 minute series topographic quadrangles scanned to create digital USGS 7.5 minute ArcInfo coverages. The resulting scanned map is projected into NAD83 Massachusetts State Plane meters. Data provided by MassGIS

Zoning Districts prepared by the Town of Heath and the Franklin Regional Council of Governments. Digital parcel data provided by the Town of Heath.

Note: Depicted boundaries are approximate and are intended for planning purposes only. Portions of the source data were obtained from 1:100,000 scale maps, therefore the accuracy of the line work on this map is +/- 100 feet.

September 7, 2012